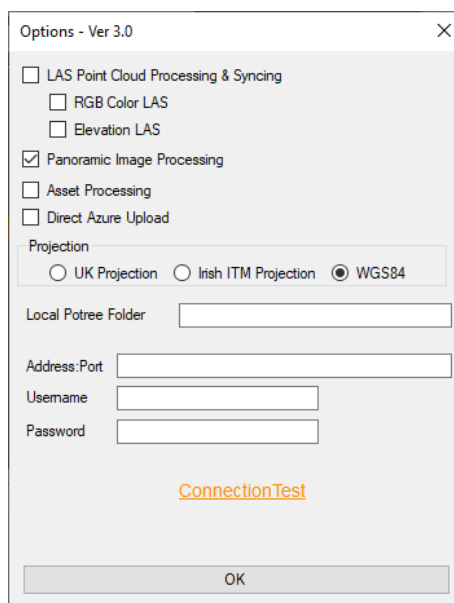
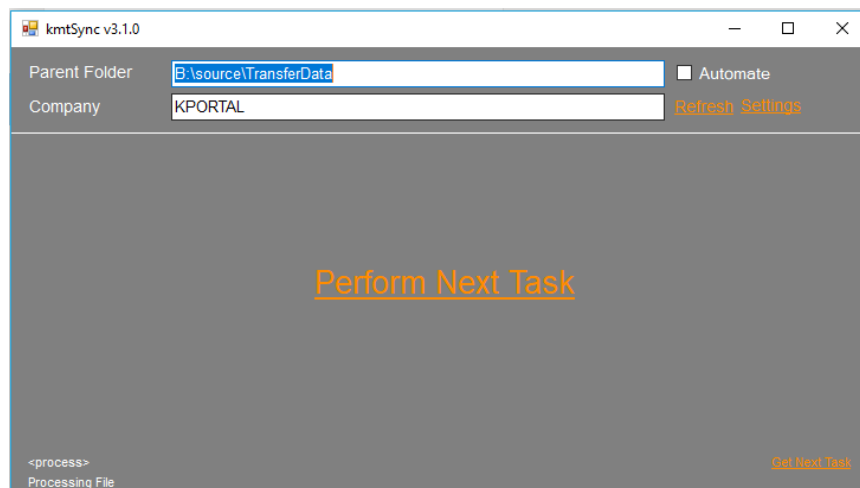


KMTSync Loader Quick Guide

Install Instructions

kmtSync is a portable application that doesn't require any install – simply download and explode into a folder, and double click kmtSync3.exe

It is worth confirming there are no firewall obstructions, by opening the Settings Screen and Clicking ConnectionTest link. Providing you receive a Hello World response, then the application is able to connect to the K-Portal Server.



After confirming Connection ensure the setting are correctly configured. For the NCTech camera, this simply requires the Panoramic Image Processing tick box and appropriate Projection – NOTE WGS84 projection will work worldwide

Return to the Home screen and ensure Company Name a and Parent folder setup.

NOTE Company name is case sensible

NOTE: The Parent folder is the path to the folder where the individual project folders are stored. In the event that you are processing directly from the Portable drive – simply enter the drive letter associated with the drive eg D:\

NOTE If you are transferring data from the Portable Drive, before processing it is important to maintain a good folder structure to ensure uploaded projects are correctly named. Example Create Source Folder with Folder named Transfer Data

eg e:\NCTCamerProjects

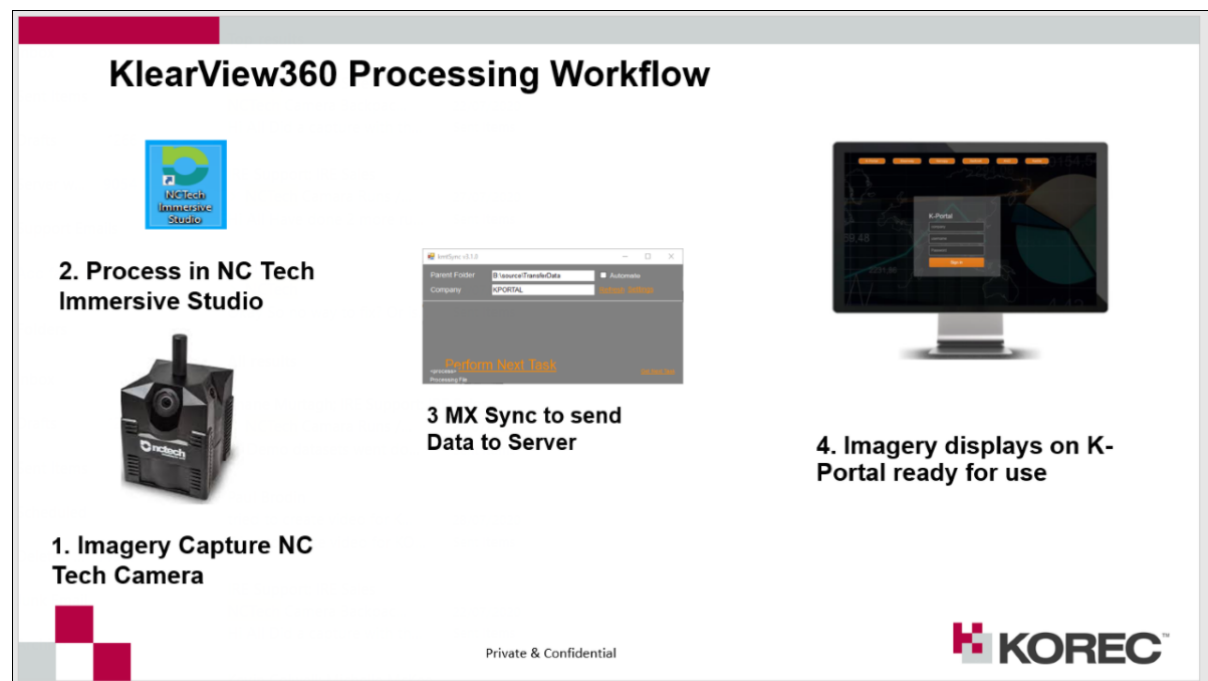
within this folder, copy the complete NCTtech project

eg e:\NCTCamerProjects\01709-1595343058

If you wish this folder can be renamed before upload

eg e:\NCTCamerProjects\01709-1595343058-Dublin Office

NCTech Camera Processing Workflow



Launch the NCTech Immersive Studio and export a project (NOTE a Project can be exported directly on to the Portable Flash Disk, without the need to transfer the project on to the PC)

Launch kmtMXSync3

Click Automate, to start the search and automatic upload of exported JPGs.

NOTE The upload can start before the Immersive Studio export has completed

NOTE The Perform Next Task and Check for next task links, are only used to manually perform a single operation, when initially configuring the system

Once Uploaded, data should appear on the portal within the hour.